

NETRON TECHNICAL NOTE February 2008

Summary

The Netron Fusion 3.4 toolset is compatible with Windows Vista (a.k.a. Windows version 6). However, due to changes in the security model, the Installation procedure for Vista is different from the procedure documented on the product package. This Technical Note gives step-by-step instructions to install and configure Netron Fusion 3.4 for Windows Vista.

Overview

Netron's customers are running Netron Fusion under either Windows 2000 Professional with Service Pack 4, Windows XP Professional with Service Pack 2 or Windows NT Workstation 4.0 with Service Pack 6. The current release level of Netron Fusion is designed to target these environments.

With the release of Windows Vista, Microsoft has made many changes to the way software installs and runs on its operating system. Nearly all these changes are a result of modifications to the runtime security model. Briefly, by default, users in a Business environment are set up as a "Standard User", who has read-only or execute-only access to most of the hard drive and Windows Registry, and no authorization to run software installers. This new security model helps reduce the risk of exposure to malicious software, but it presents a challenge to software vendors, especially vendors who supply development tools to the Enterprise market.

Traditionally, development tools have targetted a user who is, by the nature of their work, more computer-savvy and also has a need for a higher level of local authority over their machine. In prior versions of Windows, such end users could be placed under the "Power User" group, and development tools could be easily installed, configured and run. Under Vista, this is no longer the case. Only system Administrators can run installers; and some of the configuration tasks for users have changed. Below are step-by-step instructions for a typical install that will result in a configuration identical to what would be expected for Windows XP Professional or Windows 2000 Professional, but that will work when used by a Standard User.

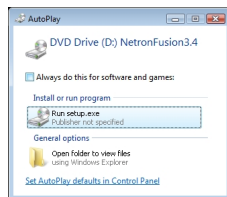
NOTE: These instructions were developed using Windows Vista Business, the

release recommended by Microsoft for business users. Other versions of Vista may yield different results.

How to Install Netron Fusion 3.4 under Windows Vista

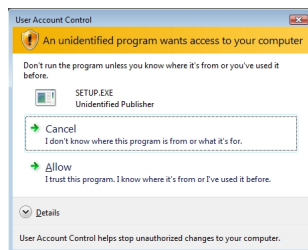
You must run the installer under a User ID that has Administrator privileges. Alternatively, you can log in under a Standard user, right-click on SETUP.EXE and select “Run as administrator”. You will then be prompted for the password for the local Administrator.

1. Since the current installer is “unsigned”, by default Vista will not permit execution of the Fusion 3.4 installer from a network share without changes to the security policy of the Administrator. If you don’t make those changes, you must either install from a CD, or the setup files must be copied by the Administrator from the CD to a folder on the local hard drive. If you insert the Netron Fusion 3.4 CD into the optical drive, you will see a dialog like this:



Select Run setup.exe.

2. When you run SETUP.EXE, you will see a User Account Control dialog pop up to ask you if you want to allow the program to run, as seen below:



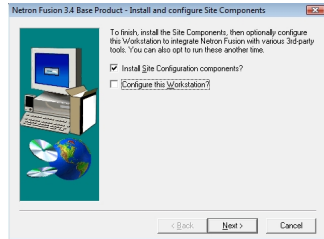
Click on

Allow

3. From this point, the Netron Fusion Base and Site install should now run as it does under Windows 2000 or Windows XP. Please note that the product MUST be installed in a directory with no embedded spaces in the name. Therefore, you cannot use “C:Program Files” as a root directory. We recommend installing the base product under “C:Fusion34”. The Site components can be installed either on

the local hard drive (under C:Fusion34site) or, if you intend to customize the site components for a large group of programmers, you can install it onto a Network drive, so long as the resulting path has no embedded spaces.

4. When you get to this panel:



...uncheck 'Configure this Workstation?'

Configure this Workstation?

' We will do this as a

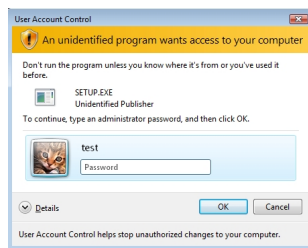
separate step, logged in as the user.

Continue with the Site installation, then at the final dialog, if you wish, view the Readme.

5. Now, log off as an Administrator user id and log on as the user who will actually be running Netron Fusion. Then run the Windows Explorer (Start->Computer), and navigate to the Netron Fusion folder that the installer created. If you used the default installation path, the Workstation setup would be found in:

C:Fusion34setupWorkstationSetupsetup.exe

6. Now double click on the above SETUP.EXE file. You will probably see a dialog box like this:



Enter the correct password of an ID with administrator privileges to continue.

7. Follow the Workstation Install wizard. It will create a FENV.BAT file for you. You cannot place this file in the C:WINDOWS file hierarchy; it needs to be installed on some other directory in your PATH. We recommend putting FENV.BAT into C:Fusion34sitebin and then adding this directory to your path. Here are the instructions to modify the PATH environment variable under Windows Vista.

First, you have to decide whether Fusion will be available to all users of this desktop, or just a particular user. Making Fusion available to all users is simpler from a desktop management point of view because you don't have to remember to configure the PATH for every new user. On the other hand, if you

use Active Directory roaming profiles, it might be better to keep that information with the User rather than the machine.

1. ***TO MAKE FUSION AVAILABLE FOR ALL USERS OF THE DESKTOP:***

i.

From the Start menu, select Control Panel. In the Control Panel, select System.

ii.

In the

Tasks

column on the left-hand side, click “

Advanced system settings

”. If you aren’t logged in as an administrator, a UAC dialog will prompt you for an administrator’s password. Enter it.

iii.

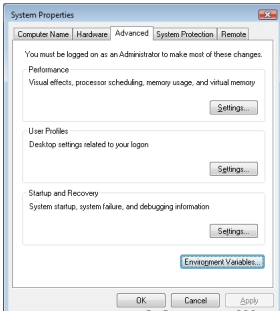
You will be presented with the

Advanced System Properties

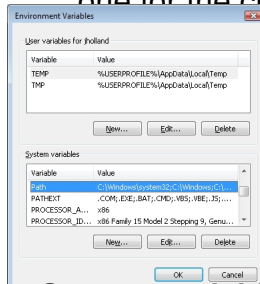
tab. Click on the

Environment Variables...

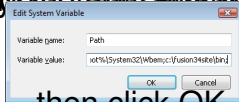
button:



Click on the Environment Variables button:



click on the Path variable in the System variables list. Edit it via the Edit System Variable dialog box.



1. ...then click OK, all the way back out until you return to the System control panel.

TO MAKE FUSION AVAILABLE TO THE CURRENT USER

ONLY:

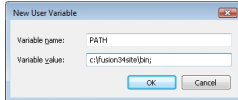
Run the Control Panel, and double-click on User Accounts. By default, the properties of the current user will be shown. In the Task column on the left, click on **Change my environment variables**

You will see the same **Environment Variables** dialog as is shown above, except that the buttons for the System variables are disabled. If there is already a Path variable in the User variables list, select it and

click Edit, otherwise click New. In this example, the PATH variable doesn't exist as a user variable, so we click New to create it.

iii.

Enter the following values into the New User Variable dialog:



iv.

Click OK on all the dialogs, all the way back out to the User Accounts control panel.

NOTE: the changes to the environment will take effect immediately, but will not be visible to programs that are already running until they are exited and restarted.

Now that FENV.BAT is on the path, let's try to run Fusion to see if everything works. From the Start menu, select All Programs -> Netron Fusion 3.4 -> Workplace . If the Netron Fusion Workplace comes up immediately with no error dialogs or messages, then everything is ready to go.

Miscellaneous User Access Policy Notes

These notes aren't Vista-specific, but are worth remembering.

1. If you use the Netron Fusion Data Manager (NFDM) or the Netron Re-usable Object Manager (NROM), the folders containing the databases must

be writeable by the user. Under a default install, those directories are:

C:Fusion34sitedatanfdm

C:Fusion34sitedatanrom

2. Other directories under Fusion can be set as read-only.
3. All source folders must be writable by the user; otherwise the source editors and Fusion Build process will fail.

Legal

Copyright © 2008 Netron Inc. All rights reserved. The information in this document may not be reproduced, duplicated, copied, sold, resold, or otherwise exploited for any commercial purpose that is not expressly permitted or licensed from Netron.

Netron Inc. makes no representations about the suitability of the information contained in this document for any purpose. All such documents are provided "as is" without warranty of any kind, whether express, implied or statutory, including but not limited to all warranties and conditions of merchantability, fitness for a particular purpose, title and non-infringement.

In no event shall Netron be liable for any special, indirect or consequential damages or any damages whatsoever resulting from loss of use, data or profits, whether in an action of contract, negligence or other tortious action, arising out of or in connection with the use or performance of information in this document.

This document and its related images could include technical inaccuracies or typographical errors. Netron reserves the right to make improvements and/or changes in the product(s), the program(s) described herein or the documents at any time without notice.